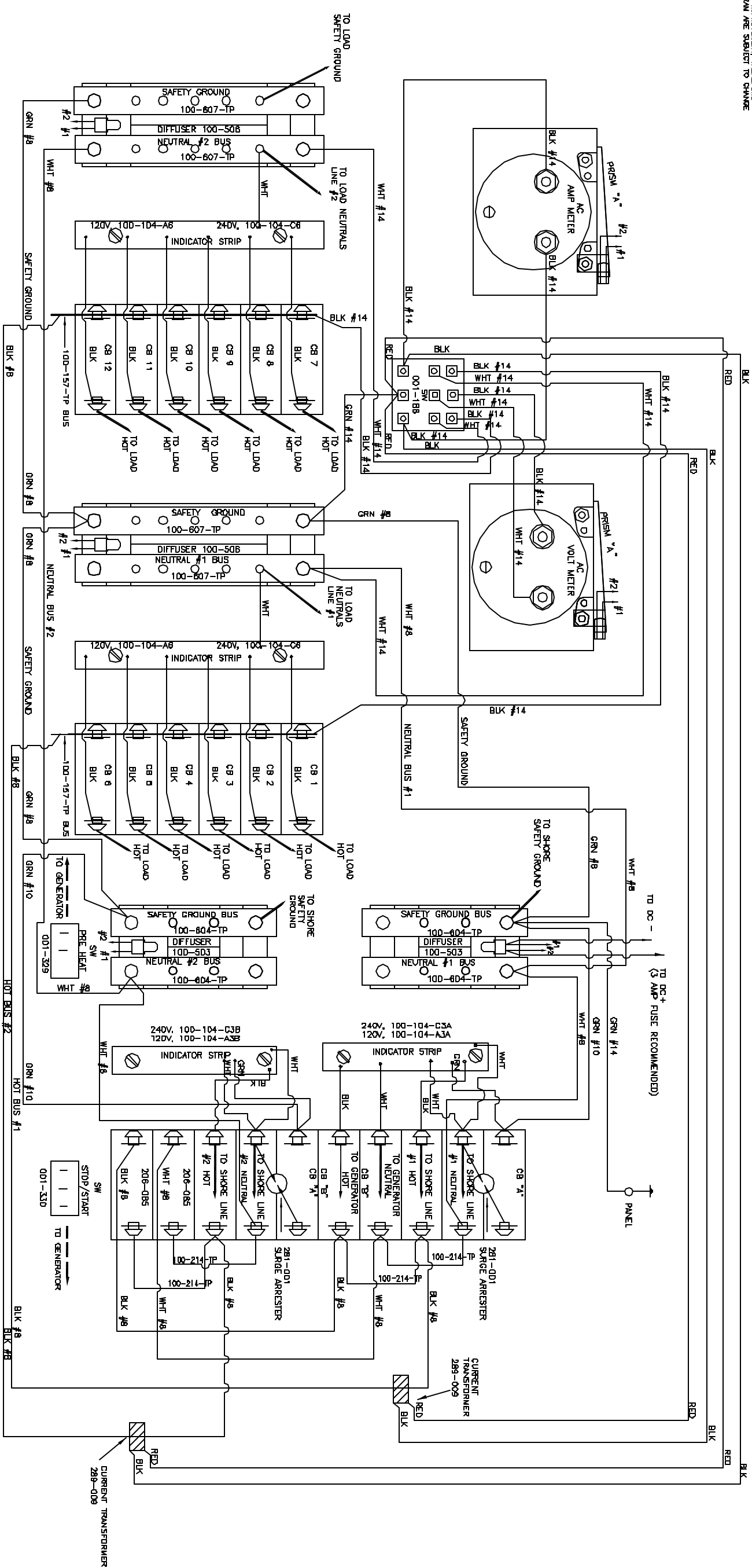


THANK YOU FOR CHOOSING PANELTRONICS. THIS WIRING DIAGRAM WILL AID YOU IN THE INSTALLATION OF YOUR NEW PANEL. IT SHOULD BE KEPT FOR FUTURE REFERENCE AND FOR YOUR RECORD. WE WOULD BE PLEASED TO ASSIST YOU WITH PROPER MAINTENANCE. YOU WILL ENJOY MANY YEARS OF RELIABLE OPERATION.

ALL PANELTRONICS PRODUCTS SHOULD BE USED AND INSTALLED IN ACCORDANCE WITH THE PANELTRONICS INSTRUCTIONS. THE PANELTRONICS INSTRUCTIONS ARE AVAILABLE FROM OUR SALES DEPARTMENT. THE PANELTRONICS INSTRUCTIONS ARE AVAILABLE FROM OUR SALES DEPARTMENT. THE PANELTRONICS INSTRUCTIONS ARE AVAILABLE FROM OUR SALES DEPARTMENT.

INSULATIONS, ALL PANELS MUST BE INSTALLED TO MEET THE REQUIREMENTS OF USCG. USCG STAFF 1, ELECTRICAL SYSTEMS, ON ALL BOATS THAT HAVE DISCARDED ENGINE FOR ELECTRICAL OR MECHANICAL POWER OR EQUIPMENT. REFER TO DISCARDED ENGINE FOR ELECTRICAL OR MECHANICAL POWER OR EQUIPMENT. REFER TO DISCARDED ENGINE FOR ELECTRICAL OR MECHANICAL POWER OR EQUIPMENT. REFER TO DISCARDED ENGINE FOR ELECTRICAL OR MECHANICAL POWER OR EQUIPMENT.

PANELTRONICS INCORPORATED IS A COMPANY COMMITTED TO TOTAL QUALITY AND CUSTOMER SATISFACTION. WE WILL CONTINUE TO IMPROVE OUR PRODUCTS AND SERVICES. ALL INFORMATION AND SPECIFICATIONS ON THIS DRAWING ARE SUBJECT TO CHANGE WITHOUT NOTICE.



AC AMP METER	
RATING	PART No
50 ACA	289-071
80 ACA	289-006
100 ACA	289-024
DIGITAL	570-004

SHORE MAIN	
CB "A"	
RATING	PART No
30A	206-0875
15A	206-0865
GENERATOR	
CB "B"	
RATING	PART No
30A	206-0835
40A	206-0843
50A	206-0855

CB1 - CB12	
RATING	PART No
5A	206-0705
10A	206-0715
15A	206-0725
20A	206-0735
25A	206-0745
30A	206-0755
40A	206-0765
50A	206-0775

METER ILLUMINATION	
PRISM "A"	
RATING	PART No
12 VDC	100-249-7
24 VDC	100-249-8
32 VDC	100-249-9

BACKLIGHT	
ASSY "A"	
RATING	PART No
12 VDC	100-243-7(R)
24 VDC	100-243-8(R)
32 VDC	100-243-9(R)

PANELTRONICS Paneltronics, Inc.
 17880 NW 27th Ave., Suite 100
 Miami, Florida, FL 33187

REAR VIEW
 PNL, AC TWELVE (PREMIER)
 AC PANEL
 PANELTRONICS

DATE: 8/20/92
 DRAWN BY: CAT
 CHECKED BY: CAT
 SCALE: 1X

3307