

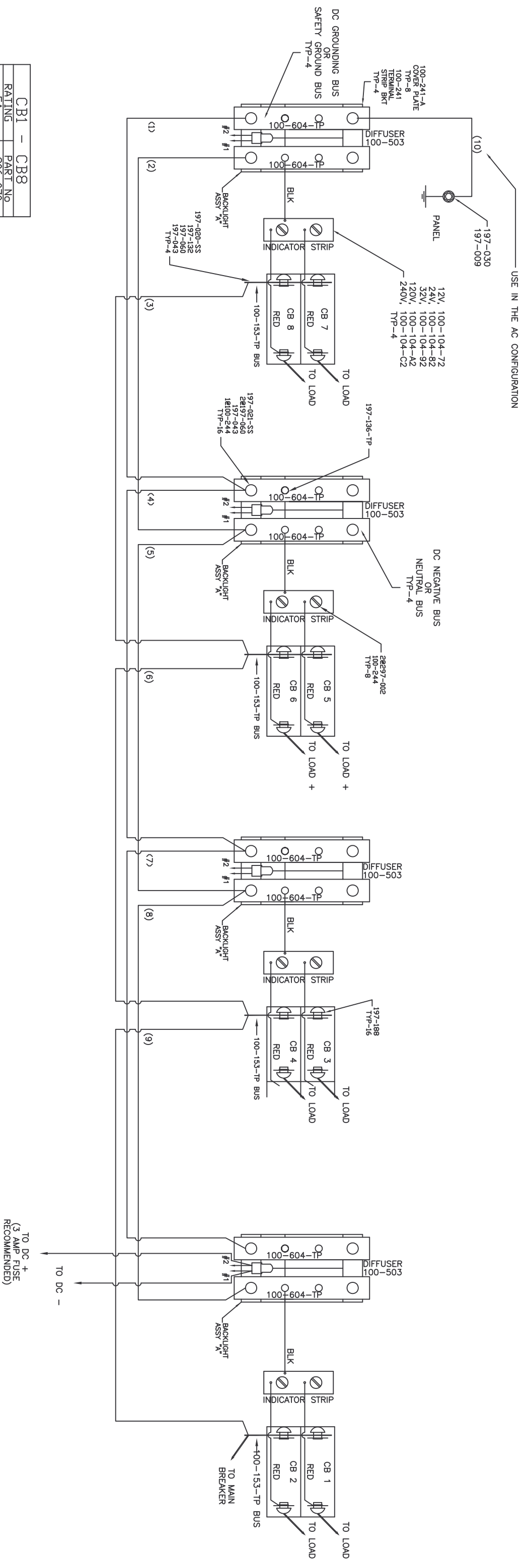
REV	DESCRIPTION	ECN	BY	DATE

REVISIONS

THANK YOU FOR CHOOSING PANELTRONICS, INC. THIS WIRING DIAGRAM WILL AID YOU IN THE INSTALLATION OF YOUR NEW PANEL. IT SHOULD BE KEPT FOR FUTURE REFERENCE AND SERVICE TO THE ELECTRICAL CONTROL PANEL. WITH PROPER MAINTENANCE, YOU WILL ENJOY MANY YEARS OF RELIABLE OPERATION.

ALL PANELTRONICS PRODUCTS SHOULD BE USED AND INSTALLED IN ACCORDANCE WITH THE PROVISIONS OF THE NATIONAL ELECTRIC CODE, U.L. AND OTHER LOCAL, MILITARY OR INDUSTRY STANDARDS THAT ARE PERTINENT TO THE PARTICULAR END USE. IN MARINE INSTALLATIONS, ALL PANELS MUST BE INSTALLED TO MEET THE REQUIREMENTS OF U.S.C.G. 33CFR SUBPART 1, ELECTRICAL SYSTEMS, ON ALL BOATS THAT HAVE GASOLINE ENGINES FOR ELECTRICAL OR MECHANICAL POWER OR PROPULSION, EXCEPT OUTBOARD ENGINES. AMERICAN BOAT AND YACHT COUNCIL (ABYC) STANDARDS AND RECOMMENDED PRACTICES SHOULD ALSO BE FOLLOWED.

PANELTRONICS INCORPORATED IS A COMPANY COMMITTED TO TOTAL QUALITY AND CONTINUOUS PRODUCT RESEARCH, DEVELOPMENT AND IMPROVEMENT, THEREFORE ALL INFORMATION AND SPECIFICATIONS ON THIS DIAGRAM ARE SUBJECT TO CHANGE WITHOUT NOTICE.



CB1 - CB8	
RATING	PART No
5A	206-070
10A	206-071
15A	206-072
20A	206-073
25A	206-074
30A	206-075
40A	206-076
50A	206-077

BACKLIGHT ASSY "A"	
RATING	PART No
12 VDC	100-243-7(R)
24 VDC	100-243-8(R)
32 VDC	100-243-9(R)

LENSES	
GREEN	AC
AMBER	DC

EXCLUSIVE PROPERTY OF PANELTRONICS, INC. NOT FOR RELEASE WITHOUT PROPER WRITTEN AUTHORIZATION. THIS DOCUMENT DISCLOSES INFORMATION WHICH PANELTRONICS INCORPORATED HAS PROPRIETARY RIGHTS.

PANELTRONICS Paneltronics, Inc.
11960 N.W. 87th Court
Hialeah Gardens, FL 33018
INCORPORATED

WIRING

PNL, 8 POSITION
CIRCUIT BREAKER

PANELTRONICS

DRAWN BY:	DATE:	CUSTOMER:	DRAWING #:	REV:
JZ	04/15/09	PANELTRONICS	6403	A
SHEET:	SCALE:	SERIES/MODEL:		
2 OF 3	N/A	6000		