

# PANELTRONICS<sup>®</sup>

INCORPORATED

## Product Data Sheet

## Waterproof Main Disconnect Panel Assembly - **NEW**

Available in numerous configurations for Shore and Generator mains up to 50Amps, this new solution from Paneltronics is ideal for exposed applications.

### Shore Main applications:

Smart breaker, with Reverse Polarity sensing coil, trips automatically upon sensing a Reverse Polarity condition. Double pole Circuit Breaker simultaneously breaks both, hot and neutral lines. Green, "Power Available" and Red "Reverse Polarity" warning LED's are included.

### Generator/Inverter Main applications:

Double pole Circuit Breaker simultaneously breaks both, hot and neutral lines. Green "Power Available" LED is included.

Part Number	Description
9972323	Shore Main 120VAC - 30Amps
9972324	Shore Main 120VAC - 50Amps
9972325	Shore Main 220VAC/50Hz - 16Amps
9972326	Shore Main 220VAC/50Hz - 30Amps
9972327	Shore Main 220VAC/50Hz - 50Amps
9972328	Generator/Inverter Main - 30Amps
9972329	Generator/Inverter Main - 40Amps
9972330	Generator/Inverter Main - 50Amps
016-032	Liquid Tight Bushing for 10/3 round boat cable
016-033	Liquid Tight Bushing for 6/3 round boat cable

### Enclosure:

6.89" (83mm)H x 3.27" (175mm)W x 4.21"(107mm)D

Material: Polycarbonate

Color: Gray

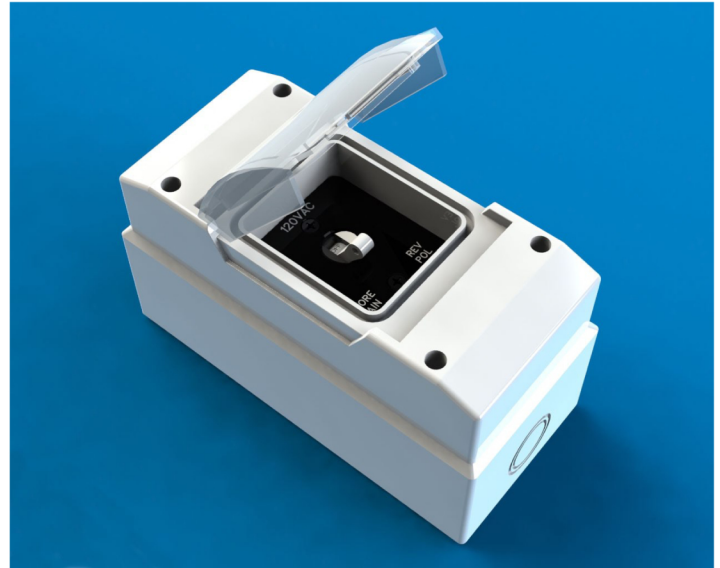
IP Rating: IP 55

### Snap-in PG Liquid Tight Bushings:

Can be used on threaded or unthreaded holes, They are ozone and weather resistant and provide light strain relief to the cable.

Material: Ethylene Propylene Diene Monomer Rubber (EPDM).

IP Rating: IP 67



### ABYC E-11.10.2.8.1.3

If the location of the main shore power disconnect circuit breaker is in excess of 10 feet (three meters) from the shore power inlet or the electrical attachment point of a permanently installed shore power cord, additional fuses or circuit breakers shall be provided within 10 feet (three meters) of the inlet or attachment point to the electrical system of the boat. Measurement is made along the conductors.

[www.paneltronics.com](http://www.paneltronics.com)

All information and specifications in this document are subject to change without notice. Paneltronics is not responsible or liable for anything that may occur as a result of errors and/or omissions within this document.

11960 NW 87th Court, Hialeah Gardens, FL 33018

Toll Free 800-367-2635 Phone: 305-823-9777 Email: [sales@paneltronics.com](mailto:sales@paneltronics.com)