

DIGITAL PANEL METERS

FEATURES & BENEFITS

- Three Digit LED Display (two digit on Frequency Meters)
- Display Character Size is 0.56"
- Supply Voltage is 8VDC to 32VDC
- Accuracy is +/- 1 % Count
- Power Consumption is Less than 300 Milliwatts
- Reversed Polarity Protected
- Operating temperature range 32°F to 122°F
- True RMS AC Voltmeter & AC Ammeter
- Splashproof front
- Requires little or no panel modification to replace 2.50" analog meters
- Meter can be front or rear window mounted
- Shallow Depth Case is only 1.00" (25.40 mm) overall
- Suitable for monitoring marine or land based power distribution and generating systems

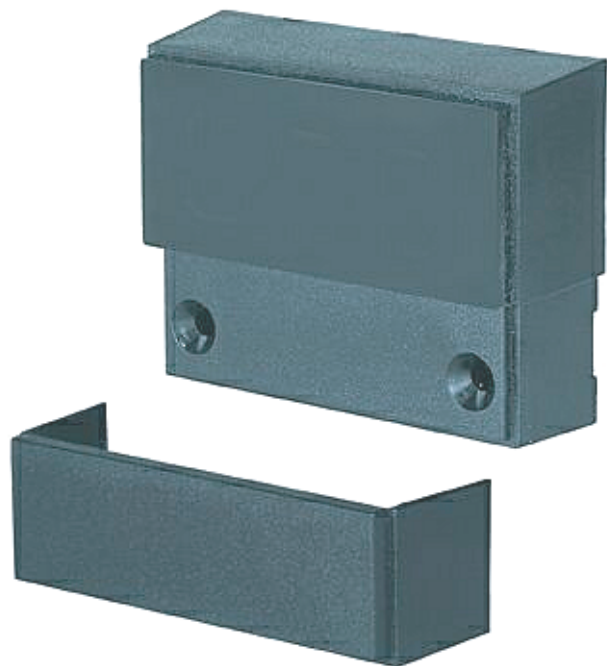


Mounting

Fits standard 2.50" analog meter surface mount cutout - 2.134" (54.2 mm) diameter. Fits standard 2.50" analog meter window mount cutout - 2.9" (73.7 mm) W X 1.28" (32.25 mm) H

Packaging

Available in Clam Packaging or Bulk



Front skirt snaps off for rear mounting

Part No. Description Specifications

570-001	DC Voltmeter	0 - 50 VDC
570-002*	DC Ammeter	0 - 100DCA
570-006†	DC Ammeter	0 - 500DCA
570-003	AC RMS Voltmeter	0 - 250VAC
570-004‡	AC RMS Ammeter	0 - 100ACA
570-005	AC Frequency	30 - 100Hz

Dimensions

3.08" (78.23 mm) W x 2.38" (60.45 mm) H
x 1.0" (25.4 mm) D

* DC Ammeter 570-002 requires a 50mV-100A shunt (Paneltronics P/N 289-013) □

† DC Ammeter 570-006 requires a 200mV-500A shunt (Paneltronics P/N 289-037)

‡ AC Ammeter 570-004 requires a 1000/1 Ratio current transformer (Paneltronics P/N 289-009)

DIGITAL PANEL METERS

METER REAR VIEW

SPAN ADJUST IN 570-002
570-006 & 570-022

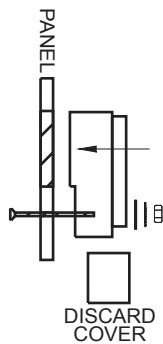
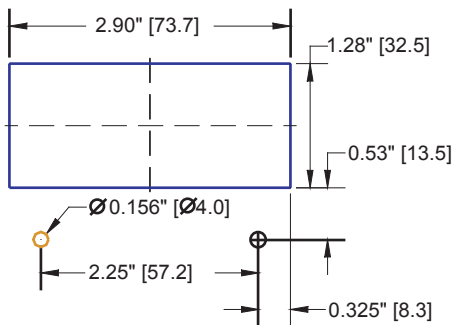
MOUNTING HARDWARE (2 PLCS)

METER	#4	#3	#2	#1
P/N 570-001* DC VOLTMETER 0-50 VDC	ORANGE DC+ INPUT	N/C	BLACK (DC -)	RED DC+ SUPPLY (FUSED)
P/N 570-002* DC AMMETER 0-100 DCA	VIOLET METER SHUNT (HI)	GRAY METER SHUNT (LOW)	BLACK (DC -)	RED DC+ SUPPLY (FUSED)
P/N 570-003* AC VOLTMETER RMS 0-250 VAC	GRAY AC HOT (INPUT)	N/C	BLACK (DC -)	RED DC+ SUPPLY (FUSED)
P/N 570-004* AC AMMETER RMS 0 - 100 ACA	GRAY CURRENT TRANSFORMER	YELLOW CURRENT TRANSFORMER	BLACK (DC -)	RED DC+ SUPPLY (FUSED)
P/N 570-005* FREQ. METER 30-100 HZ	WHITE AC HOT (INPUT)	N/C	BLACK (DC -)	RED DC+ SUPPLY (FUSED)
P/N 570-006* DC AMMETER 0-500 DCA	VIOLET METER SHUNT (HI)	GRAY METER SHUNT (LOW)	BLACK (DC -)	RED DC+ SUPPLY (FUSED)
P/N 570-022* DC AMMETER 0-99 DCA	VIOLET METER SHUNT (HI)	GRAY METER SHUNT (LOW)	BLACK (DC -)	RED DC+ SUPPLY (FUSED)

NOTES:
 * ADD "A" TO P/N FOR CLAM PACK KIT
 * ADD "B" TO P/N FOR BOXED KIT
 (KIT INCLUDES WIRES, MOUNTING HARDWARE, & INSTRUCTIONS)

Paneltronics, Inc. is a company committed to total quality and continuous product research, development and improvement, therefore all information, specifications and prices are subject to change without notice.

PANEL CUTOUT FOR WINDOW (REAR) MOUNTING



PANEL CUTOUT FOR SURFACE (FRONT) MOUNTING

