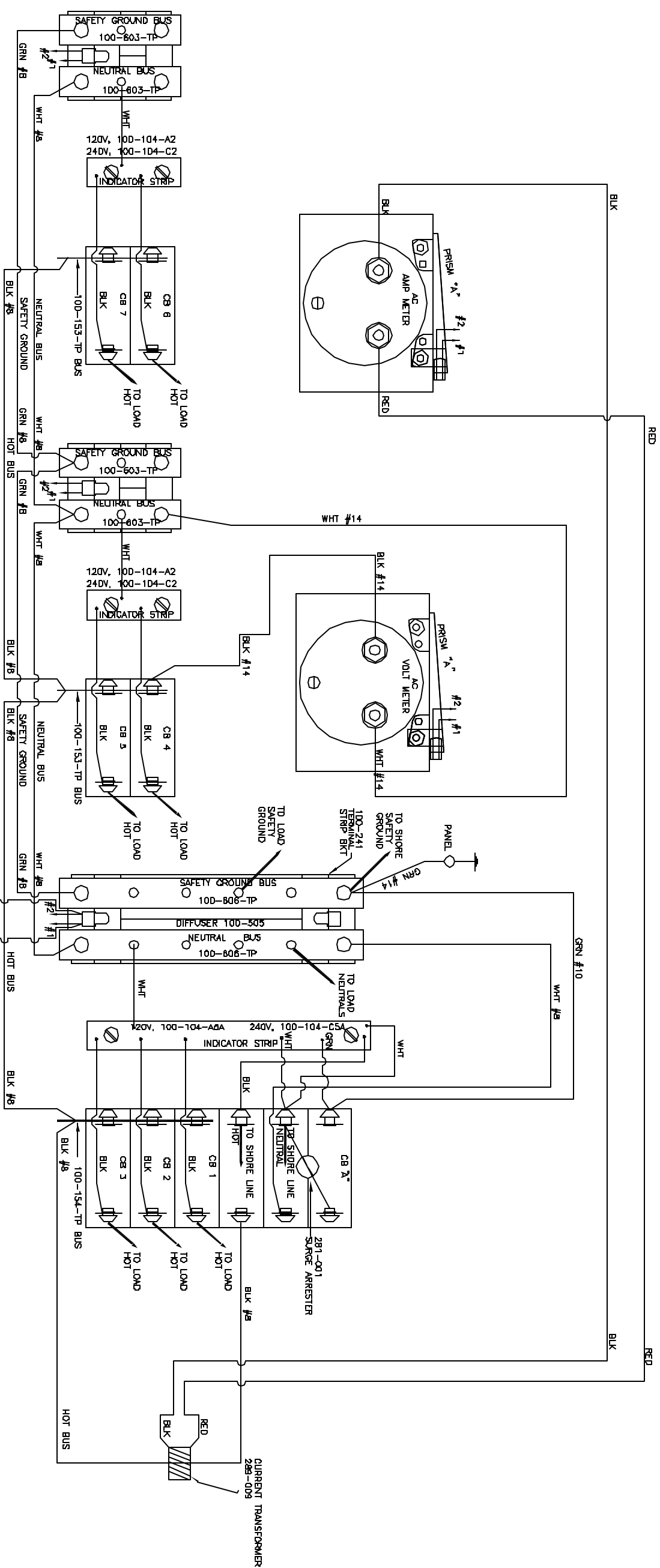


THANK YOU FOR CHOOSING PANELTRONICS INC. THIS WIRING DIAGRAM WILL Aid YOU IN THE INSTALLATION OF YOUR NEW PANEL. IT SHOULD BE KEPT FOR FUTURE REFERENCE AND SERVICE TO THE ELECTRICAL CONTROL PANEL. WITH PROPER MAINTENANCE YOU WILL ENJOY MANY YEARS OF RELIABLE OPERATION.

ALL PANELTRONICS PRODUCTS SHOULD BE USED AND INSTALLED IN ACCORDANCE WITH THE PROVISIONS OF THE NATIONAL ELECTRIC CODE (N.E.C.) AND OTHER LOCAL, MUNICIPAL OR INDUSTRY STANDARDS THAT ARE PERTINENT TO THE PARTICULAR END USE. IN MARINE INSTALLATIONS, ALL PANELS MUST BE INSTALLED TO MEET THE REQUIREMENTS OF U.S.I.C. ZEPHYR SUBPART 1, ELECTRICAL SYSTEMS, ON ALL BOATS THAT HAVE GASOLINE ENGINES, AMERICAN BOAT AND YACHT COUNCIL (ABYC) STANDARDS AND RECOMMENDED PRACTICES SHOULD ALSO BE FOLLOWED.

PANELTRONICS INCORPORATED IS A COMPANY COMMITTED TO TOTAL QUALITY AND CONTINUOUS PRODUCT RESEARCH, DEVELOPMENT AND IMPROVEMENT. THEREFORE ALL INFORMATION AND SPECIFICATIONS ON THIS DRAWING ARE SUBJECT TO CHANGE WITHOUT NOTICE.



AC VOLT METER	
RATING	PART No
0-150 VAC	289-003
0-300 VAC	289-007
DIGITAL	570-003

AC AMP METER	
RATING	PART No
50 ACA *	289-004
50 ACA	289-011
80 ACA	289-006
100 ACA	289-024
DIGITAL	570-004
* DIRECT READ	

SHORE MAIN CB "A"	
RATING	PART No
30A	206-087S
15A	206-086S

CB1 - CB7	
RATING	PART No
5A	206-070S
10A	206-071S
15A	206-072S
20A	206-073S
25A	206-074S
30A	206-075S
40A	206-076S
50A	206-077S

METER ILLUMINATION PRISM "A"	
RATING	PART No
12 VDC	100-249-7
24 VDC	100-249-8
32 VDC	100-249-9

BACKLIGHT ASSY "A"	
RATING	PART No
12 VDC	100-243-7(R)
24 VDC	100-243-8(R)
32 VDC	100-243-9(R)

TO DC +
 (3 AMP FUSE RECOMMENDED)

TO DC -

PANELTRONICS 11800 Highway 1A, Suite 100 Ft. Lauderdale, FL 33308	
PROJECT NO: 09/20/92 DRAWING NO: 2 of 4	COMMENTS: REAR VIEW (PREMIER) DRAWN BY: CAT
PART NO: 3305	