

THANK YOU FOR CHOOSING PANELTRONICS. THIS WIRING DIAGRAM WILL Aid YOU IN THE INSTALLATION OF OUR NEW PANEL. IT SHOULD BE KEPT FOR FUTURE REFERENCE AND SHOULD BE KEPT WITH THE PANEL THROUGHOUT THE LIFE OF THE PANEL. IT WILL ENJOY MANY YEARS OF RELIABLE OPERATION.

THE REQUIREMENTS OF THE NATIONAL ELECTRIC CODE (NEC) AND OTHER LOCAL, NATIONAL OR INDUSTRIAL STANDARDS THAT ARE PERTINENT TO THE PARTICULAR END USE, IN WHATEVER MANNER THEY MAY BE APPLIED, MUST BE MET. THE REQUIREMENTS OF LISTED SAFETY STANDARDS FOR ELECTRICAL SYSTEMS, ON ALL DEVICES, THAT HAVE OBTAINED LISTING FROM AN APPROVED LISTING AGENCY, SUCH AS THE UL LISTING AGENCY, THE INTERNATIONAL ELECTRIC FIRE ALARMS ASSOCIATION (IEA), THE NATIONAL FIRE PROTECTION ASSOCIATION (NFPA), THE AMERICAN BOAT AND YACHT COUNCIL (ABYC), AND THE RECOMMENDED PRACTICES SHOULD ALSO BE FOLLOWED.

PANELTRONICS ASSUMES NO LIABILITY FOR A COMPANY'S COMPLIANCE WITH LOCAL, NATIONAL AND INTERNATIONAL STANDARDS. DEVELOPMENT AND MODIFICATION OF THE WIRING DIAGRAM AND INFORMATION AND SPECIFICATIONS ON THIS DIAGRAM ARE SUBJECT TO CHANGE WITHOUT NOTICE.

DC AMP METER	
RATINGS	PART No
50 DCA *	289-002
50 DCA	289-016
80 DCA	289-005
100 DCA	289-014
DIGITAL	570-001
* INTERNAL SHUNT	

DC VOLT METER	
RATINGS	PART No
B-15 VDC	289-001
16-32 VDC	289-017
D-50 VDC	289-025
DIGITAL	570-001

AC AMP METER	
RATINGS	PART No
50 ACA *	289-004
50 ACA	289-011
80 ACA	289-008
100 ACA	289-024
DIGITAL	570-004
* DIRECT READ	

AC VOLT METER	
RATINGS	PART No
0-150 VAC	289-003
0-300 VAC	289-007
DIGITAL	570-003

METER SHUNT "A"	
RATINGS	PART No
50/50 MW	289-015
80/80 MW	289-010
100/50 MW	289-013

DC MAIN CB "C"	
RATINGS	PART No
50A	206-028
60A	206-049
80A	206-024
100A	206-025

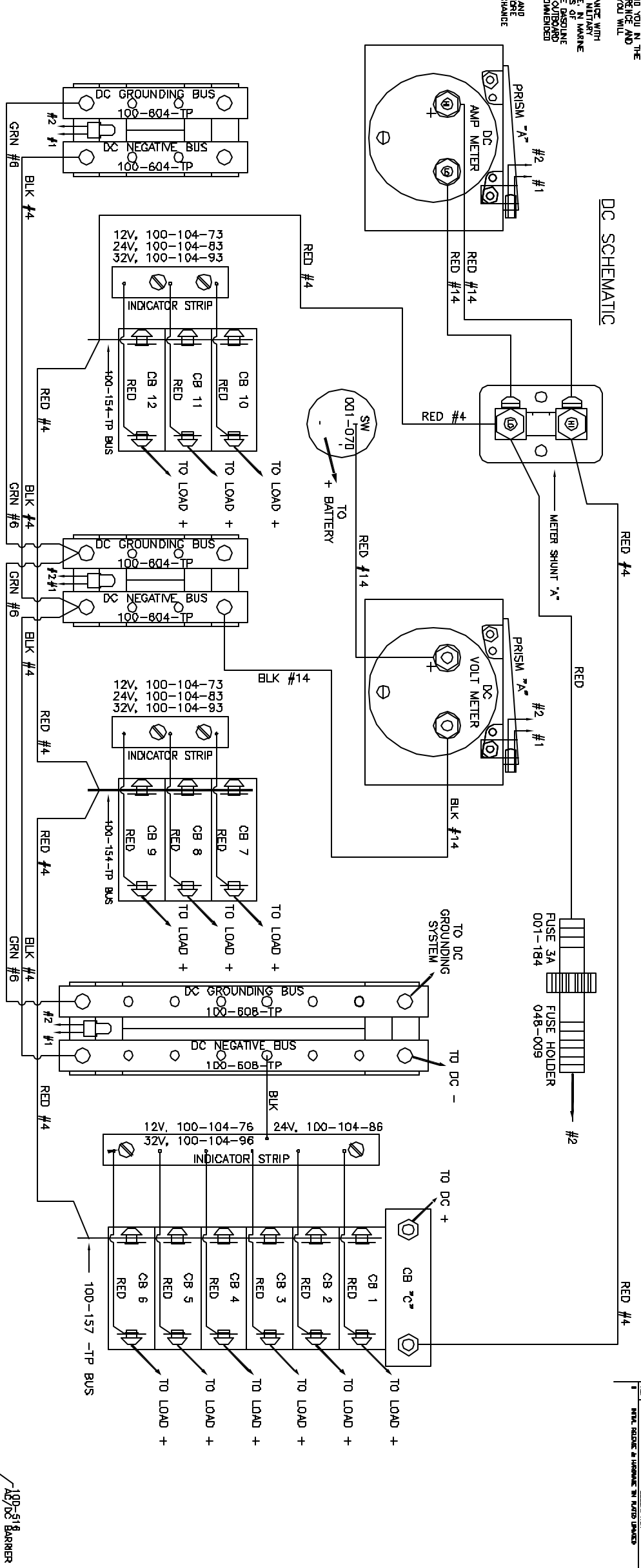
SHORE MAIN CB "A"	
RATINGS	PART No
30A	208-0878
15A	208-0865

CB1 - CB19	
RATINGS	PART No
3A	206-0705
10A	206-0715
15A	206-0725
20A	206-0735
25A	206-0745
30A	206-0755
40A	208-0765
50A	208-0775

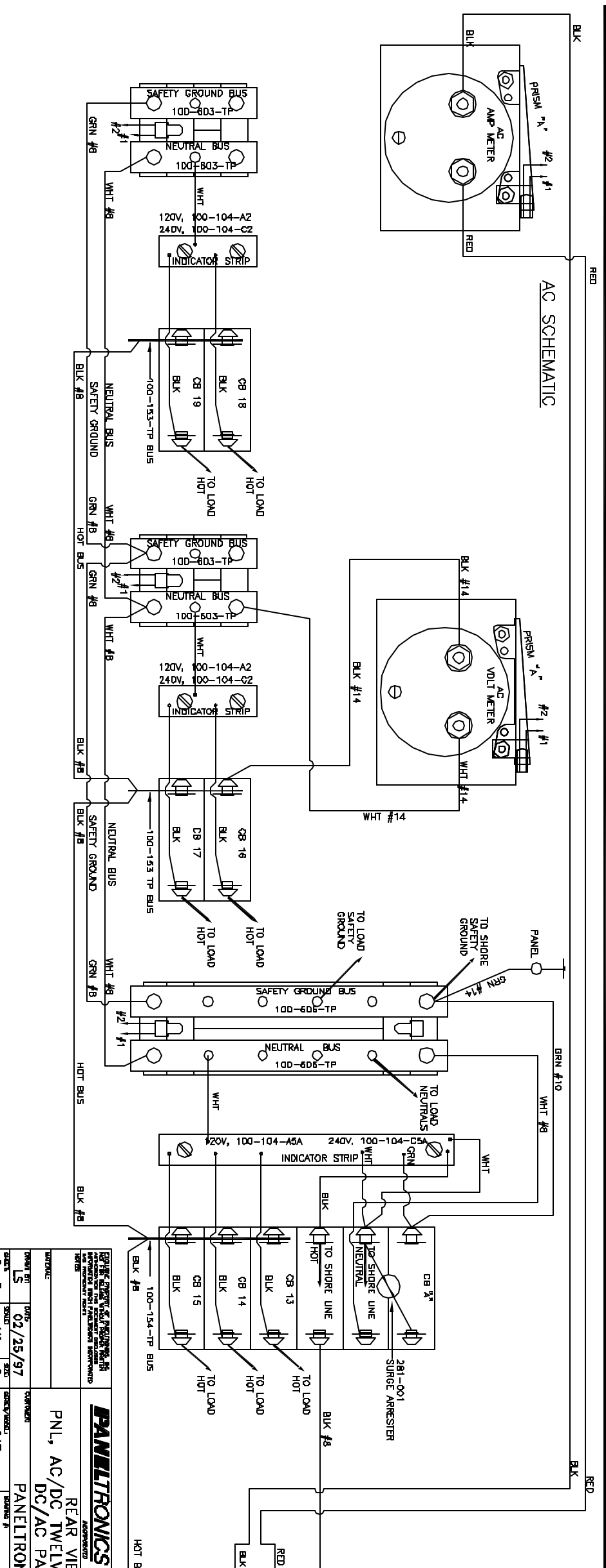
METER ILLUMINATION PRISM "A"	
RATINGS	PART No
12 VDC	100-249-7
24 VDC	100-249-8
32 VDC	100-249-9

BACKLIGHT ASSY "A"	
RATINGS	PART No
12 VDC	100-243-7/R
24 VDC	100-243-8/R
32 VDC	100-243-9/R

### DC SCHEMATIC



### AC SCHEMATIC



**PANELTRONICS**  
 Paneltronics, Inc.  
 11850 Highway 13  
 Hudson, California, FL 33018

REAR VIEW  
 PNL, AC/DC TWELVE (PREMIER)  
 DC/AC PANEL  
 PANELTRONICS

DATE 02/25/97  
 DRAWN BY 1X  
 CHECKED BY D  
 SCALE CAT  
 PART NO 3401  
 REV 0