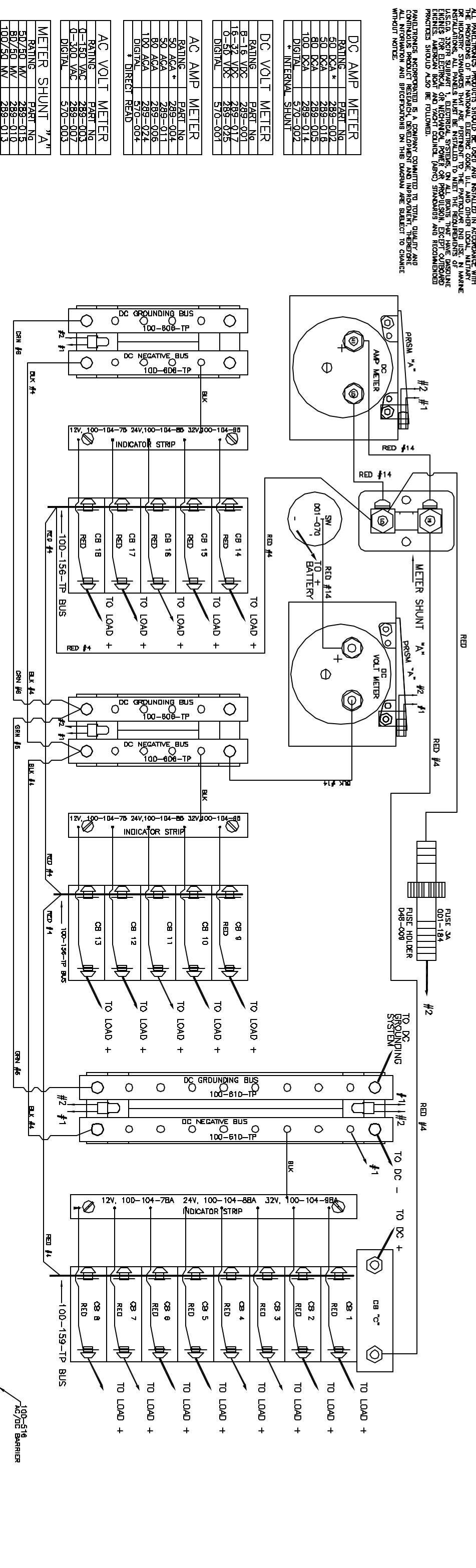
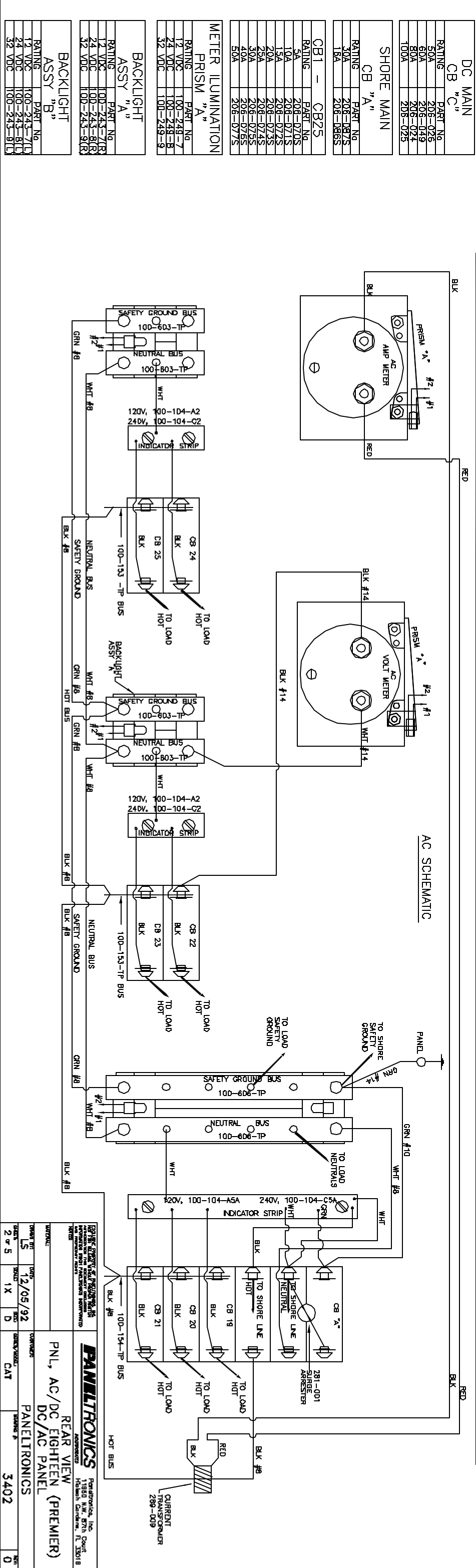


THANK YOU FOR CHOOSING PANELTRONICS. THIS WIRING DIAGRAM WILL Aid YOU IN THE INSTALLATION OF OUR NEW PANEL. IT SHOULD BE KEPT FOR FUTURE REFERENCE AND SHOULD BE USED ONLY AS A GUIDE. WE STRONGLY RECOMMEND THAT YOU FOLLOW ALL INDUSTRY STANDARDS AND LOCAL REGULATIONS. ALL PANELS MUST BE INSTALLED TO MEET THE REQUIREMENTS OF THE NATIONAL ELECTRICAL CODE (NEC) AND OTHER LOCAL ELECTRICAL CODES. WE STRONGLY RECOMMEND THAT YOU FOLLOW THE REQUIREMENTS OF THE NATIONAL ELECTRICAL CODE (NEC) AND OTHER LOCAL ELECTRICAL CODES. WE STRONGLY RECOMMEND THAT YOU FOLLOW THE REQUIREMENTS OF THE NATIONAL ELECTRICAL CODE (NEC) AND OTHER LOCAL ELECTRICAL CODES. WE STRONGLY RECOMMEND THAT YOU FOLLOW THE REQUIREMENTS OF THE NATIONAL ELECTRICAL CODE (NEC) AND OTHER LOCAL ELECTRICAL CODES.

DC SCHEMATIC



AC SCHEMATIC



DC MAIN CB "C"	
RATING	PART No
50A	205-026
60A	205-049
80A	205-024
100A	205-025
SHORE MAIN CB "A"	
RATING	PART No
30A	206-087S
15A	206-086S
CB1 - CB25	
RATING	PART No
5A	208-070S
10A	208-071S
15A	208-072S
20A	208-073S
25A	208-074S
30A	206-075S
40A	206-076S
50A	206-077S
METER ILLUMINATION PRISM "A"	
RATING	PART No
12 VDC	100-249-7
24 VDC	100-249-8
32 VDC	100-249-9
BACKLIGHT ASSY "A"	
RATING	PART No
12 VDC	100-243-7LR
24 VDC	100-243-8LR
32 VDC	100-243-9LR
BACKLIGHT ASSY "B"	
RATING	PART No
12 VDC	100-243-7LD
24 VDC	100-243-8LD
32 VDC	100-243-9LD

PANELTRONICS Paneltronics, Inc. 17180 Highway 17, Suite 100, Houston, Texas 77058

REAR VIEW
 PNL, AC/DC EIGHTEEN (PREMIER)
 DC/AC PANEL
 PANELTRONICS

DATE: 12/05/92
 BY: [Signature]
 CHECKED BY: [Signature]
 CATEGORIES: CAT

3402